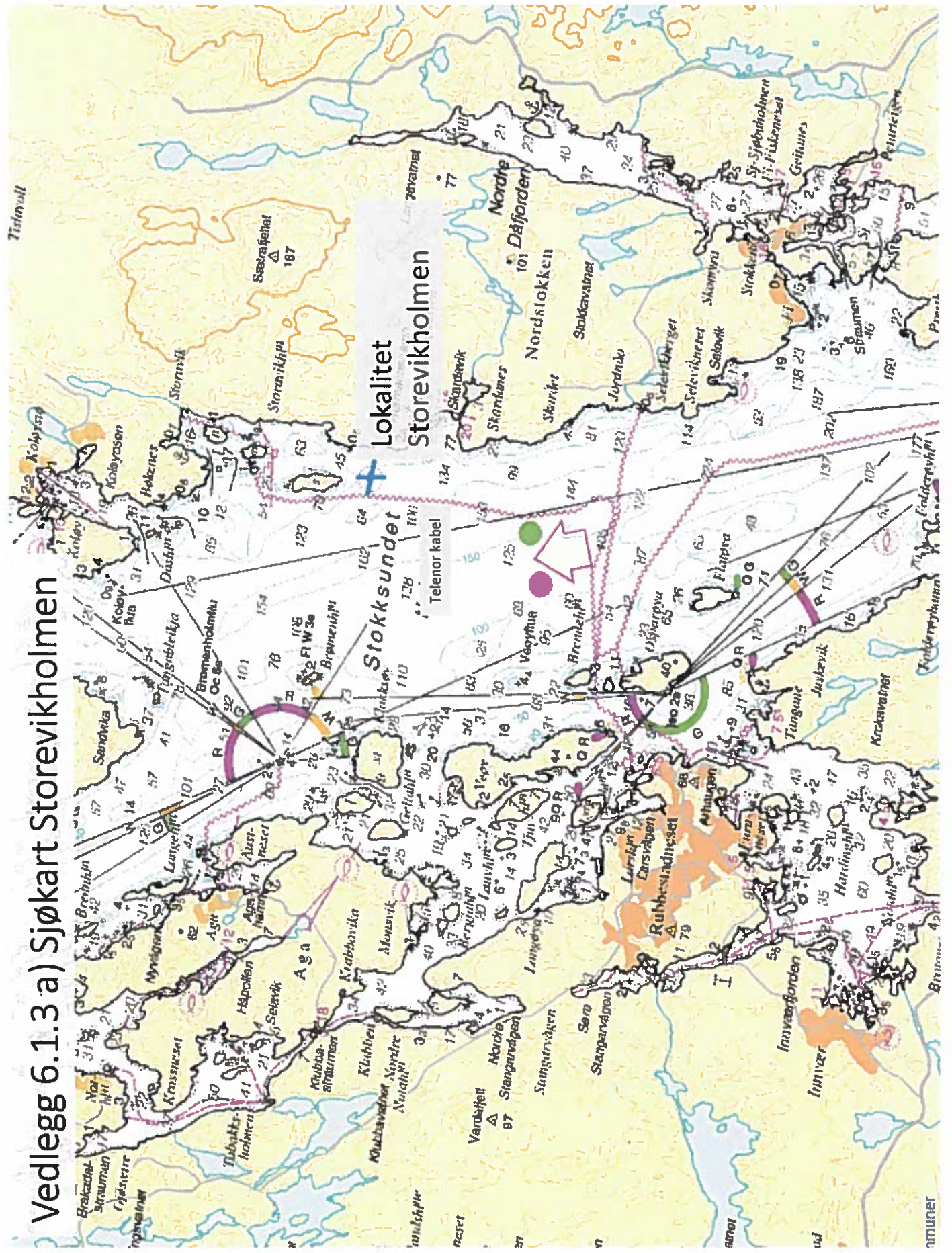
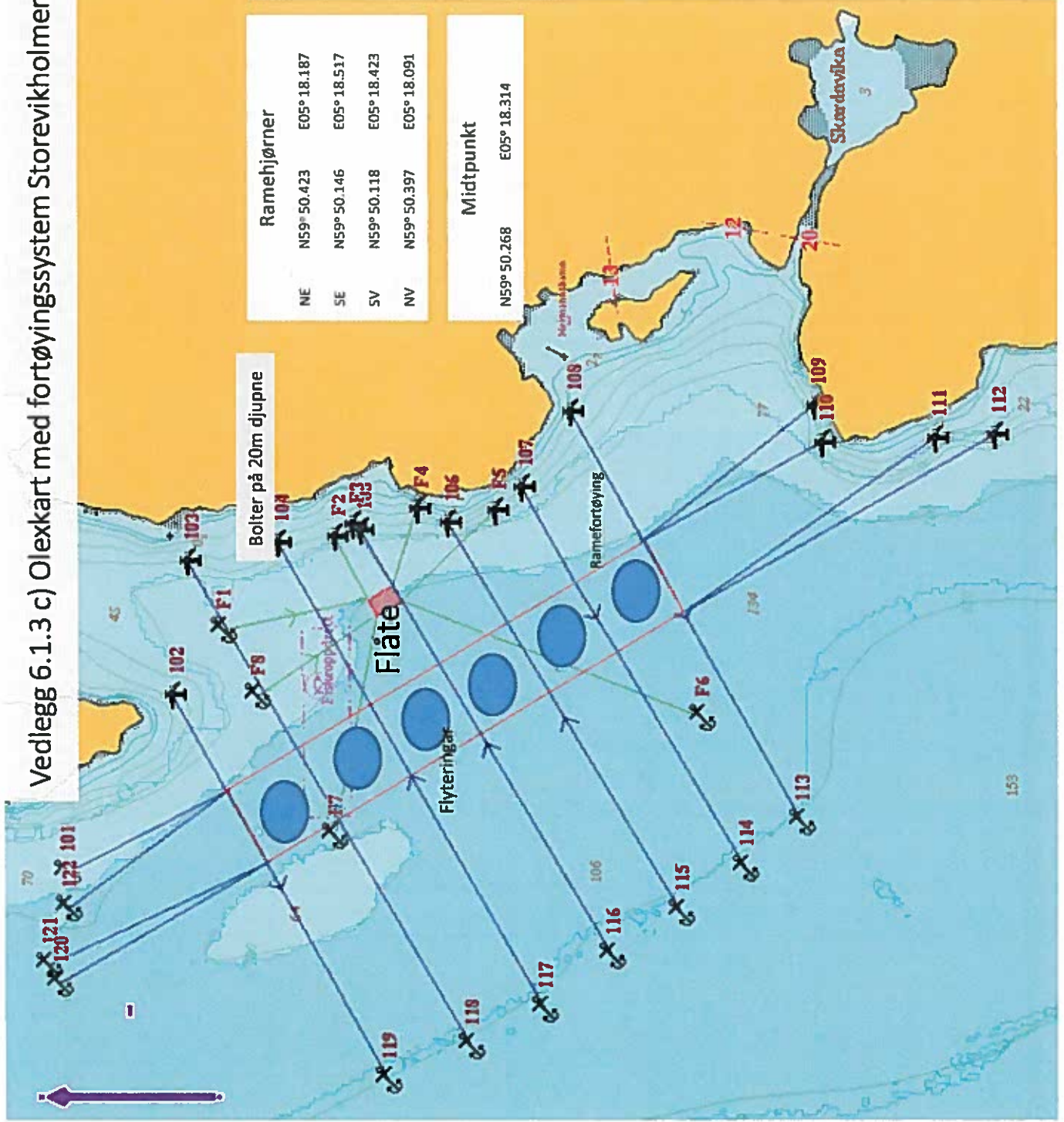


Vedlegg 6.1.3 a) Sjøkart Storevikholmen



Vedlegg 6.1.3 c) Olekart med fortøyingsystem Storevikholmen



Ramehjørner	
NE	N59° 50.423 E05° 18.187
SE	N59° 50.146 E05° 18.517
SV	N59° 50.118 E05° 18.423
NV	N59° 50.397 E05° 18.091

Midtpunkt	
	N59° 50.268 E05° 18.314

Linetr. og ankerposisjoner	
101	N59° 50.531 E05° 18.077
102	N59° 50.461 E05° 18.314
103	N59° 50.451 E05° 18.491
104	N59° 50.390 E05° 18.514
105	N59° 50.334 E05° 18.532
106	N59° 50.277 E05° 18.542
107	N59° 50.228 E05° 18.588
108	N59° 50.195 E05° 18.688
109	N59° 50.032 E05° 18.697
110	N59° 50.027 E05° 18.647
111	N59° 49.951 E05° 18.654
112	N59° 49.911 E05° 18.657
113	N59° 50.040 E05° 18.144
114	N59° 50.078 E05° 18.083
115	N59° 50.121 E05° 18.024
116	N59° 50.167 E05° 17.968
117	N59° 50.212 E05° 17.895
118	N59° 50.261 E05° 17.847
119	N59° 50.316 E05° 17.802
120	N59° 50.535 E05° 17.931
121	N59° 50.543 E05° 17.955
122	N59° 50.529 E05° 18.031

Bolter på 20m dypne

Flåte

Flyteringar

Ramefortøying

Skardsvika

